

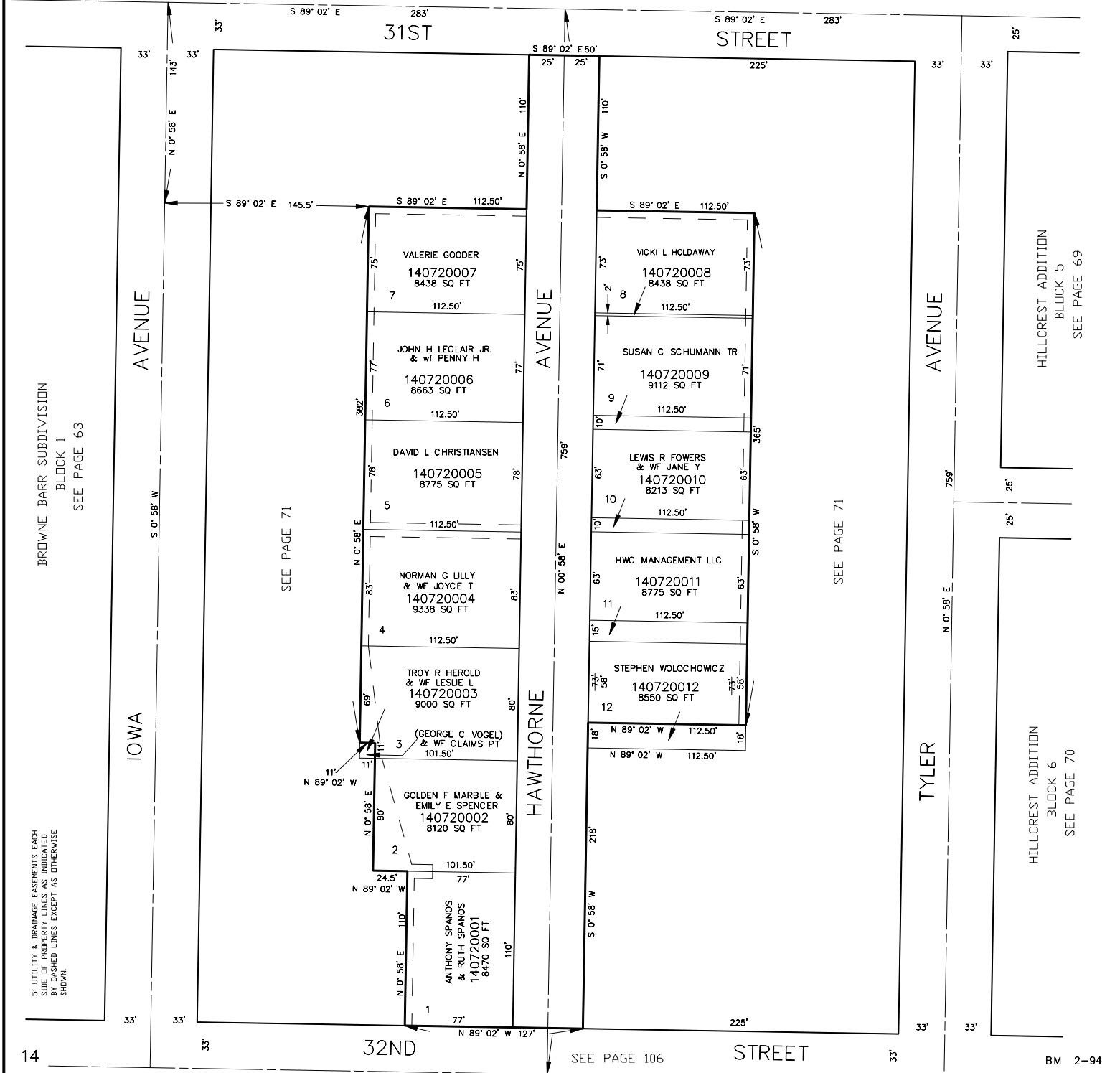
PART OF THE S.W. 1/4, SEC. 34, T.6N., R.1W., S.L.B. & M.
OAK WOOD HEIGHTS

TAXING UNIT: 25

SEE PAGE 105

IN OGDEN CITY
 SCALE 1" = 50'

FOR COMPLETE ENG DATA SEE
 ORIGINAL DEDICATION PLAT IN
 BOOK 13, PAGE 28 OF RECORDS.



BROWNE BARR SUBDIVISION
 BLOCK 1
 SEE PAGE 63

HILLCREST ADDITION
 BLOCK 5
 SEE PAGE 69

HILLCREST ADDITION
 BLOCK 6
 SEE PAGE 70